

COMMUNITY HEALTH NEEDS ASSESSMENT



AHN WEXFORD

Report

November 2021



Table of Contents

A. Introduction.....	5
B. Frequently Asked Questions.....	7
C. Internal Revenue Service (IRS) Requirements	8
D. Executive Summary.....	9
E. 2021 Allegheny Health Network Prioritized Findings.....	11
F. Defined Community	21
G. Methodology	24
H. Steering Committee Members.....	31
I. Additional Information.....	32

Mission

To create a remarkable health experience, freeing people to be their best.

Vision

A world where everyone embraces health.

Values

People matter

Every person contributes to our success. We strive for an inclusive culture, regarding people as professionals, and respecting individual differences while focusing on the collective whole.

Stewardship

Working to improve the health of the communities we serve and wisely managing the assets that have been entrusted to our care.

Trust

Earning trust by delivering on our commitments and leading by example.

Integrity

Committing to the highest standards encompassing every aspect of our behavior including high moral character, respect, honesty, and personal responsibility.

Customer-focused collaboration

Because no one person has all the answers, we actively seek to collaborate with each other to achieve the right outcomes for our customers.

Courage

Empowering each other to act in a principled manner and to take appropriate risks to do what is right to fulfill our mission.

Innovation

Committing to continuous learning and exploring new, better, and creative ways to achieve our vision.

Excellence

Being accountable for consistently exceeding the expectations of those we serve.

A. Introduction

The hospitals of Allegheny Health Network, as they have for decades, provide exceptional health care to help people live healthy lives and continue to extend their reach, offering a broad spectrum of care and services.

The tradition continues by using the latest medical innovations to treat patients. Gaining knowledge through research to constantly improve how to prevent, diagnose, and treat illness, AHN staffs each hospital with experienced, expert, and compassionate physicians, nurses, and other health care professionals dedicated to medicine, people, and healing.

AHN is committed to giving patients the proper care, at the right place, at the right time. Physicians from various specialties work as a team to coordinate patients' care from start to finish. AHN explores every possible option for treatment. AHN has established medical facilities in communities throughout the region, so patients have convenient access to care. Also, AHN works around patients' schedules to help maintain their quality of life while receiving treatment and therapy.

AHN can extend its reach to more people as a health network by offering a broad spectrum of care and services. AHN has 14 hospitals and more than 200 primary- and specialty-care practices. AHN has approximately 2,400 physicians in every clinical specialty, 21,000 employees, and 2,000 volunteers. AHN provides world-class medicine to patients in their communities, across the country, and around the world.

AHN's physicians continually explore and develop new treatments that allow us to bring medical discoveries from the laboratory directly to patients. These breakthroughs help save lives and give patients access to the latest treatments for disease and medical conditions. Allegheny Health Network is also committed to educating and training the next generation of doctors by serving as the clinical campus for both Lewis Katz School of Medicine at Temple University and Drexel University College of Medicine.

Allegheny Health Network is an integrated health care system that serves patients from across a four-state region that includes Pennsylvania and portions of New York, Ohio, and West Virginia. AHN has more than 80 medical, surgical, and radiation oncology physician practices; one of the state's most extensive bone marrow transplant and cellular therapy programs; and the nation's largest – and western Pennsylvania's only – radiation oncology network accredited by both the American Society for Radiation Oncology and American College of Radiology. Allegheny Health Network's cancer program has more than 200 clinical trials offered throughout its network of hospitals and clinics.

AHN has received accolades from numerous organizations, including Thomson Reuters, AARP, Healthgrades, and Consumer Reports. These accolades recognize AHN's dedication to excellence and strengthen its ability to tackle diseases so we may find a cure for tomorrow.

About AHN Wexford

AHN Wexford in Wexford, Pennsylvania, is the newest full-service, clinician-led hospital in the Allegheny Health Network. The new AHN hospital provides world-class health care closer to home for residents in the North Hills communities of Pittsburgh.

The private 160-bed hospital opened in 2021 and has a 24-bed emergency department while offering high-quality, innovative health care services. The region's top medical experts deliver some of the latest procedures, such as same-day spine surgery and minimally invasive heart operations. We also provide specialty care in cancer, neurology, cardiology, radiology, gastroenterology, and orthopedics.

Wexford Hospital will expand the AHN system-wide commitment to comprehensive health care for women at every stage of life. It offers a complete labor and delivery unit with a level 2 NICU and services for gynecological oncology, advanced breast care, and urogynecology.

Wexford also offers the following medical services:

- Cardiac catheterization lab
- Hybrid OR for advanced surgical procedures
- Short-stay observation unit
- Adult intensive care unit
- Advanced diagnostic imaging

We add to the investment AHN has made in health care in Pine Township since 2014. Outpatient facilities located near the hospital include:

- AHN Wexford Health + Wellness Pavilion
- AHN Pediatric Orthopaedic Institute
- AHN McCandless Neighborhood Hospital

Many special amenities make our hospital comfortable and convenient for patients, including valet parking, Austin's Playrooms for children, and the Mario Lemieux Foundation Healing Terrace – an outdoor greenspace for healing and relaxation. The large, family-friendly inpatient rooms offer reclining sleep options, natural light, and patient-controlled room temperature, lighting, and entertainment.

Wexford Hospital offers a wide range of specialty services and physicians to residents of the Pittsburgh North Hills. A vital part of Allegheny Health Network, Wexford Hospital gives you access to exceptional teams that deliver highly specialized care.

For more information about AHN Wexford, please click [here](#).

B. Frequently Asked Questions

WHAT IS A COMMUNITY HEALTH NEEDS ASSESSMENT (CHNA)?

A community health needs assessment is an effective method of identifying the unmet health care needs of a population and making changes to meet these needs.

WHY WAS A CHNA PERFORMED?

Through comprehensive data and analysis, community health needs assessments identify key health needs and issues locally. Not-for-profit hospitals or charitable-status organizations under section 501(c)(3) of the Federal Internal Revenue Code are required to provide benefits to the community that they serve.

Not-for-profit hospitals must conduct a CHNA and adopt an implementation strategy at least once every three years to meet the identified community health needs. CHNAs identify areas of concern within the community related to the current health status of the region. The identification of the region's health needs provides AHN Wexford and its community organizations with a framework to improve the health of its residents.

HOW WAS DATA FOR THE CHNA REPORT COLLECTED?

A working group and steering group were formed in summer 2021 to complete the CHNA and its initiatives. The information collected is a snapshot of the health of residents in the service area of AHN Wexford, encompassing socioeconomic information, health statistics, demographics, and mental health issues, etc. The group worked passionately and tirelessly to be the voice of the residents served.

C. Internal Revenue Service (IRS) Requirements

The Patient Protection and Affordable Care Act (PPACA), which went into effect on March 23, 2010, requires tax-exempt hospitals to conduct community health needs assessments (CHNA) and implementation strategy plans to improve the health and wellbeing of residents within the communities served by the hospitals. These strategies created by hospitals and institutions consist of programs, activities, and plans specifically targeted toward community populations. The execution of the implementation strategy plan is designed to increase and track the impact of each hospital's efforts.

The requirements imposed by the IRS for tax-exempt hospitals and health systems must include the following:

- Conduct a CHNA every three years.
- Adopt an implementation strategy to meet the community health needs identified through the assessment.
- Report how the strategy addresses the needs identified in the CHNA and a description of needs that are not being addressed with the reasons why.

The Department of the Treasury and the IRS require a CHNA to include:

1. A separate written report for each hospital (state license designation).
2. Description of the community served by the hospital and how that community is defined.
3. Description of the process and methods used to conduct the CHNA.
4. Information gaps that may impact the ability to assess needs.
5. Identification of any collaborating partners.
6. Identification and qualifications of any third parties assisting with CHNA.
7. Description of how input from the community was used.
8. Prioritized description of all community health needs identified through the CHNA.
9. Description of existing health care facilities within the community available to meet the needs identified.
10. A description of the needs identified that the hospital intends to address, the reasons those needs were selected, and how the hospital will address the selected needs.

D. Executive Summary

Project Overview

Allegheny Health Network (AHN) executed a CHNA process that included collecting primary and secondary data. The CHNA working group, consisting of members from AHN's Community Affairs department, oversaw the CHNA along with the project consultant, Tripp Umbach.¹ Representatives from each AHN hospital facility and representatives from departments within AHN formed a steering committee that provided high-level feedback and input on primary and secondary data collected. Organizations and community stakeholders within the primary service area were engaged in identifying the needs of the community. Community organizations, government agencies, educational systems, and health and human services entities were engaged throughout the CHNA. The comprehensive primary data collection phase resulted in contributions from a multitude of regional community stakeholders and representatives from organizations.

Input from the community was sought through a customized multi-language community survey, stakeholder interviews, and a provider survey. Community input was aligned with secondary data collections and presented to the CHNA Steering Committee as a framework for assessing current community needs, identifying new/emerging health issues, and advancing health improvement efforts to address identified needs.

Although the multi-language community survey was broadly deployed, the non-English responses were relatively low. However, many of the community agencies that provide health and human services to those specific populations and have knowledge of their health needs participated in the survey process.

Specifically, the primary data collection consisted of several project components. In total, 59 community stakeholder interviews were conducted with individuals who represented a) broad interests of the community, b) populations of need, or c) persons with specialized knowledge in public health. Feedback from 2,201 online surveys was collected from AHN providers and from 866 surveys from the community.

An internal planning meeting was held with the AHN Steering Committee to discuss and finalize the CHNA needs for 2021 based on primary and secondary data results. A resource inventory was generated to highlight available programs, services, organizations, and agencies within each of the priority needs in the service area.

A significant project piece of the CHNA was compiling a regional profile (secondary data analysis). The regional profile was composed utilizing local, state, and federal figures providing valuable information on a wide array of health, clinical, and social issues. Tripp Umbach, along with the working group and steering group, examined and discussed different socioeconomic aspects, health outcomes, and health factors that affect residents' behaviors, specifically the influential factors that impact the health of residents.

¹ Allegheny Health Network contracted with Tripp Umbach, a private health care consulting firm, to complete a community health needs assessment. Tripp Umbach has worked with more than 400 communities in all 50 states. In fact, more than one in five Americans lives in a community where Tripp Umbach has worked.

The CHNA determined the health status of the community with direct initiatives and planning strategies. Without a doubt, the CHNA connected new partners and solidified relationships with local and regional agencies with the overall goal to improve the health outcomes of residents in the region.

AHN Wexford is dedicated to providing exceptional care to residents in its communities. AHN Wexford offers a full spectrum of comprehensive health services, programs, and resources to support the community served and to meet/advance identified community health needs. AHN Wexford's patient-centered approach to care means a greater focus on coordinated health and wellness services and being accountable and responsive to patients.

The overall CHNA involved multiple steps that are depicted in the flow chart below. The first step of the process included a kick-off meeting. The meeting allowed the group to discuss visions and strategies and create a shared vision for the CHNA. The session delineated the scope of the project and mechanisms for sharing resources and skills necessary to achieve AHN Wexford's goals and objectives to improve the health of the community.

Figure 1: Overall CHNA Process Flow Chart²



² For additional information on the primary and secondary data collected as part of the CHNA, please refer to the methodology section of the report.

E. 2021 Allegheny Health Network Prioritized Findings

AHN Wexford

The CHNA results, upon review of extensive primary and secondary research, input from community members and stakeholders, and an evaluation of identified key regional priorities, illustrate the continued need for focuses on Social Determinants of Health (SDOH),³ Behavioral Health, Chronic Disease, and Health Equity. Each key need area had subareas of concentration.

The prioritized needs were selected through the efforts of the CHNA Steering Committee. Opportunities to advance those efforts and make a more significant impact are evident. Specific strategies for addressing the needs will be delineated in the implementation strategy plan.

The chart below illustrates the 2021 current CHNA needs of each Allegheny Health Network hospital facility, particularly for AHN Wexford. The 2021 needs were based on data collected for the assessment and included how AHN Wexford will build upon its areas of concern.

Table 1: 2021 Prioritized Needs

2021 Prioritized Findings													
Allegheny Health Network (AHN)	Social Determinants of Health					Behavioral Health			Chronic Disease				
	Transportation	Workforce Development	Cost of Care	Access to care*	Food Insecurity, Diet, Nutrition	Substance Use Disorder	Mental Health Services	Postpartum Depression	Diabetes	Heart Disease	Cancer	COPD	Obesity
Allegheny General Hospital	x	x			x	x			x	x	x		
Allegheny Valley Hospital	x					x	x		x	x			
Canonsburg Hospital	x			x		x			x	x			
Forbes Hospital	x					x	x		x	x		x	
Grove City Medical Center				x			x		x	x			x
Jefferson Hospital	x	x	x		x	x					x		x
Saint Vincent Hospital	x	x		x	x	x	x	x	x		x		x
West Penn Hospital		x			x			x	x		x		x
Westfield Memorial Hospital						x	x	x	x	x	x		
Wexford Hospital					x	x	x	x		x			

³ In 2018, access to care was the overarching community need. In 2021, after internal review and discussions, SDOH replaced access to care as the focus. Understanding SDOH helps identify the many underlying factors and issues that serve as barriers to accessing care. Addressing the conditions of one's environment, such as where people work, play, and live, can dramatically affect the quality of life for many residents.

Allegheny Health Network (AHN)	Social Determinants of Health					Behavioral Health			Chronic Disease					Health Equity
	Transportation	Workforce Development	Cost of Care	Access to care*	Food Insecurity, Diet, Nutrition	Substance Use Disorder	Mental Health Services	Postpartum Depression	Diabetes	Heart Disease	Cancer	COPD	Obesity	Diversity, Equity, & Inclusion**
Brentwood Neighborhood Hospital			x	x										
Harmar Neighborhood Hospital			x	x										
Hempfield Neighborhood Hospital			x	x										
McCandless Neighborhood Hospital			x	x										

* Access to care includes primary care, specialty care, and access to general services.

**Diversity, Equity, & Inclusion includes LGBTQ+ and cultural competency.

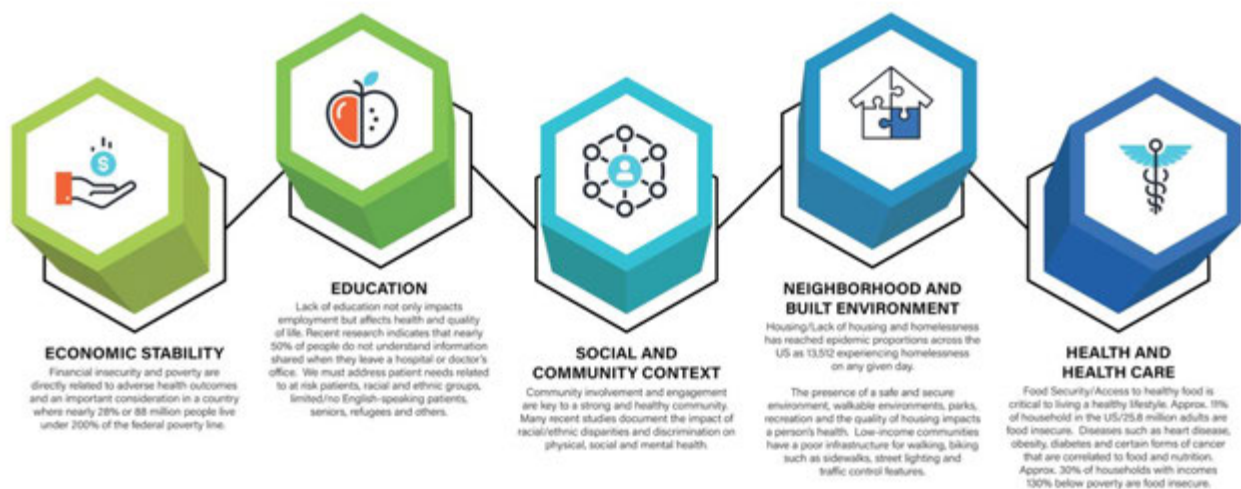
A) Social Determinants of Health

The World Health Organization (WHO) defines social determinants of health as the economic and social conditions that influence individual and group differences in health status. These economic and social conditions under which people and groups live may increase or decrease the risk of health conditions or diseases among individuals and populations. Addressing SDOH is paramount to creating a healthier community.

Various domains categorize SDOH; Figure 2 displays five domains as categorized by Healthy People 2030. Data links determinants and domains to health status, such as the correlation of one's ZIP code resulting in drastically different health statuses for patients with the same/similar health conditions. SDOH domains are also contributors to health disparities and inequities across the nation. The literature stresses the need for multi-sector organizations to collaborate to address social determinants and make positive impacts on overall patient health. In addition, targeting specific populations with specialized interventions is imperative to providing equitable health care.

AHN Wexford will identify and address critical SDOH such as food insecurity, diet, and nutrition, behavioral health (substance use, mental health service, and postpartum), chronic diseases (heart disease), and health equity (diversity, equity, and inclusion).⁴

Figure 2: Understanding SDOH ([Healthy People 2030](#)).



Source: Healthy People 2030

⁴ AHN Wexford's primary service area encompasses Allegheny, Armstrong, Beaver, Butler, Clarion, and Lawrence counties. Secondary data was supplied related to identified counties.

Food Insecurity, Diet, and Nutrition

Food insecurity is a growing problem. In Pennsylvania, 1,353,730 people are facing hunger, including 383,520 children.⁵ Concentration in school is more difficult when students are hungry. Hunger can cause children to be irritable, hyperactive, and aggressive. These behavioral issues can distract students from their schoolwork, leading to developmental delays and learning disabilities. Hunger eventually can lead to tripling one's chances of suffering from poor health, tripling the likelihood of obesity among women, and doubling one's chances of developing diabetes. Fifty percent of children facing hunger will need to repeat a grade.

Hunger hurts the local economy by causing increased health care spending, increased costs to charities, lost productivity, and poor education outcomes that affect not just the lifetime earnings of those who are hungry but society as a whole. Hunger costs in Pennsylvania have risen to nearly \$3.25 billion a year. Individuals with low food security frequently rely on processed foods, ultimately making individuals more susceptible to obesity and chronic illnesses.

- In 2017, the U.S. Census Bureau found 12.5% of residents in Allegheny County, 16.2% in Armstrong, 14.1% in Beaver, 8.3% in Butler, 13.0% in Clarion, and 18.3% in Lawrence received Supplemental Nutrition Assistance Program (SNAP) benefits.
- A higher number of residents in Armstrong and Lawrence counties received SNAP when compared to Pennsylvania (14.3%) and the nation (12.5%).
- In Pennsylvania, 33.9% of households receiving SNAP benefits have children.
- Providers and community stakeholders reported that access to food is a top health problem in their communities.
- Community stakeholders reported access to healthy foods as an approach to improve the quality of life for residents.

B) Behavioral Health

Substance Use Disorder

Falling under the umbrella of behavioral health, substance use and mental health impact the lives of families and individuals throughout the United States. The percentage of residents diagnosed with behavioral health problems has grown exponentially. Along with the growth, the need for mental health services and substance use programs has not diminished. Genetics and socioeconomic factors play vital roles in individuals diagnosed with a mental health problem, and frequently societal factors increase the likelihood of one engaging in unhealthy life choices such as alcohol and drug use. According to the American Hospital Association, behavioral health disorders affect nearly one in five Americans and have

⁵ Feeding America: www.feedingamerica.org/hunger-in-america/pennsylvania

community-wide impacts. Hospitals and health systems provide essential behavioral health care services to millions of Americans every day.⁶

Although progress has been made in lowering rates of substance use in the United States, the use of behavior-altering substances continues to take a major toll on the health of individuals, families, and communities nationwide.

- Allegheny County has the highest number of facilities that provide mental health services at 48, followed by Armstrong (4), Beaver (4), Butler (9), Clarion (4), and Lawrence (4).
- The CDC in 2019 estimated 14.0% (34.1 million) of U.S. adults smoke cigarettes.
- The provider survey reported that behavioral health was the top persistent health problem in the community. The mentally ill were reported as being the most vulnerable population in the community.
- The survey found that 82.7% of respondents cited mental health and 60.2% identified suicide prevention as a 4/5 rating on a rating scale of 1-5, where 1 equals less of a concern and 5 equals more of a concern.
- The top responses from the provider survey showed that access to behavioral health services, mental health services, and substance use support would have the greatest impact on the quality of life for residents in the community.
- Community stakeholders cited drug/alcohol and behavioral/mental health as top health problems in their communities. They also reported substance use as being the top high-risk behavior and having access to behavioral health services as the top choice to improve the quality of life for residents.
- The community survey also found that drug/alcohol use (47.2%) was a top health problem in the community and that access to drug/alcohol and mental health services is needed to improve residents' quality of life and health.

Mental Health Services

The prevalence of mental illness in America is vast and continues to grow yearly. According to the National Alliance on Mental Health, one in five U.S. adults experiences a mental illness, one in 20 U.S. adults experiences serious mental illness, and 17% of youth (6-17 years old) experience a mental health disorder.⁷

The figure below reports U.S. adults who experienced any mental illness within the past 12 months, broken out by populations.⁸ The figure shows that more than one-third of American adults who are

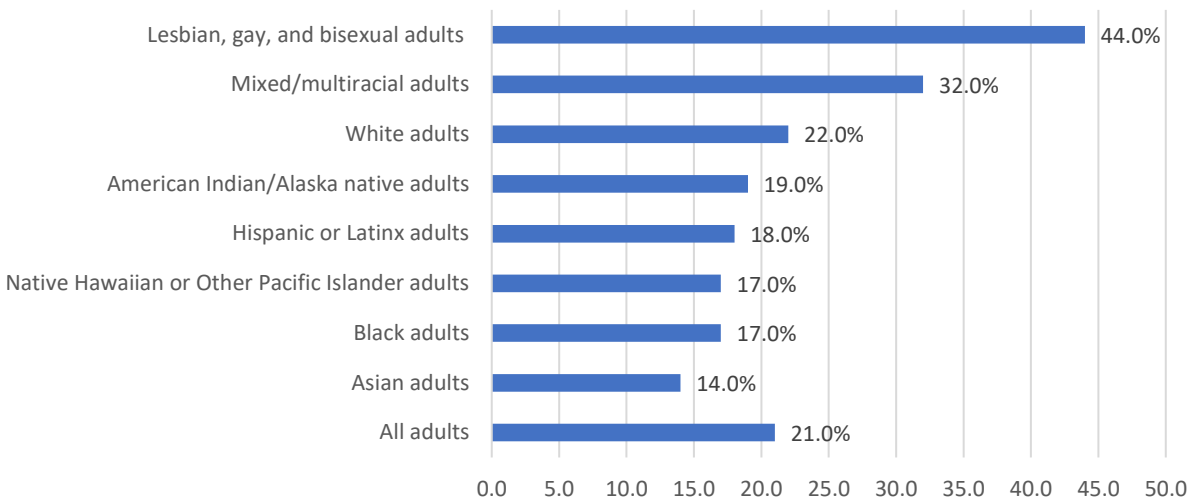
⁶ American Hospital Association: www.aha.org/advocacy/access-and-health-coverage/access-behavioral-health

⁷ National Alliance on Mental Health: www.nami.org/mhstats

⁸ Ibid.

lesbian, gay, and bisexual have a mental illness followed by individuals who are mixed/multiracial (32.0%).

Figure 3: 12-Month Prevalence of Any Mental Illness



Source: National Alliance on Mental Health

While COVID-19 has intensified and heightened mental health conditions, barriers to receiving mental health services has been problematic for years. One central issue is the availability of mental health professionals.

County Health Rankings & Roadmaps in 2021 reveals that Allegheny County (349.0 per 100,000 population) has a higher number of mental health providers when compared to Armstrong (111), Beaver (115), Butler (169), Clarion (138), and Lawrence (126) counties. The availability of mental health providers allows one to have access to care and services and enables those suffering from the disease appropriate care and treatment when sought. While individuals face mental health challenges and struggle, people who seek regular treatment can improve their symptoms and live a better, prosperous, and an improved quality of life.

Postpartum Depression

Postpartum depression, maternal depression, or the “baby blues” are emotions often experienced by mothers as they prepare for and welcome a new member into their family. After birth many mothers experience anxiety, depression, guilt, isolation, sadness, hopelessness, emptiness, or overwhelmed emotions. The CDC reports about one in eight women experiences symptoms of postpartum depression. Additionally, a recent analysis found the rate of depression diagnosed at delivery was roughly seven times higher in 2015 than in 2000.

Common risk factors associated with maternal depression include race/ethnicity, age, socioeconomic status, history of depression, health problems of the baby, having multiple babies during birth, difficulty

breast-feeding, and unwanted or unplanned pregnancy. Depression in mothers can disrupt the bonding experience in infancy. This phase, which is critical and healthy for child development, creates a healthy, nurturing, and empathetic relationship between child and mother. Unfortunately, when the mother is depressed, she is less likely to engage and participate in a healthy and loving parent experience.

Maternal depression is a community and public health problem often having a ripple effect, taking a toll on the well-being and livelihood of mothers and their families. Addressing postpartum requires a community commitment of those who share a common interest and desire to support the health of all mothers and families who seek and require help.

Fortunately, postpartum depression is treatable and AHN Wexford has taken the lead in offering services to address this growing issue. Postpartum depression is a substantial community issue and AHN Wexford will continue to bring awareness and address the effects of untreated maternal depression to continue to engage women and families in need of help.

C) Chronic Disease

Chronic diseases are a significant cause of disability and death in Pennsylvania and the United States. The seven leading causes of death are heart disease, cancer, stroke, chronic lower respiratory disease (CLRD), unintentional injury, Alzheimer's disease, and diabetes. According to the Pennsylvania Department of Health, chronic disease accounts for about 70.0% of all deaths annually in Pennsylvania. With Pennsylvania's aging population and the advances in health care enabling people to live longer, the cost associated with chronic disease will increase significantly if no changes are made. Clinical preventive services, such as routine disease screening and scheduled immunizations, are key to reducing the effects of chronic disease and reducing death. Preventive services both prevent and detect illnesses and diseases in their earlier, more treatable stages, significantly reducing the risk of illness, disability, early death, and medical care costs.

Heart Disease

- Heart disease is the leading cause of death for men, women, and people of most racial and ethnic groups in the United States.⁹
- For heart disease deaths per 100,000 residents in 2015-2019, the Pennsylvania Department of Health reported 186.5 deaths in Allegheny, 175.5 in Armstrong, 195.1 in Beaver, 170.9 in Butler, 192.0 in Clarion and 201.2 in Lawrence counties.¹⁰
- Residents in Allegheny, Armstrong, Beaver, Clarion, and Lawrence counties have higher rates of death from heart disease when compared to the state (175.3 per 100,000 population).

⁹ Centers for Disease Control and Prevention. www.cdc.gov/heartdisease/facts.htm

¹⁰ The Pennsylvania Department of Health:
www.health.pa.gov/topics/HealthStatistics/VitalStatistics/CountyHealthProfiles/Documents/current/allegheny.aspx
x

D) Health Equity

Diversity, Equity, & Inclusion

Health equity objectives are designed to end past infrastructures and workplace cultures that treat people inequitably based on demographic factors such as gender, age, ethnicity, race, sexual orientation, and other factors. Health inequities are rooted in historical and current policies and systems that may favor one group over others. These historical and structural inequities take their toll on health and the quality of life through economic, cultural, political, social, and physical factors. Health is deeply connected and rooted to where people live, work, learn, and play.

Recognition is increasing across the health care environment. Improving health and achieving health equity demands a broad, multi-pronged approach and requires community engagement and addressing economic, social, and environmental factors that influence health. For example, prejudice and discrimination can lead to delays in medical diagnosis and treatment. The New England Journal of Medicine published a study reporting that women were seven times more likely than men to be misdiagnosed and discharged in the middle of having a heart attack due to the medical concepts of most diseases being based on understandings of male physiology and women having different heart attack symptoms than men.¹¹

Health inequities unveil startling contrasts in health among different people. The Pennsylvania Department of Health reported vast disparities among its residents.

Publication data from 2018 reveal Black residents had significantly higher age-adjusted cancer incidence rates than whites in these areas:¹²

- Prostate
- Lung and bronchus
- Kidney and renal pelvis
- Pancreas
- Liver and intrahepatic bile duct
- Myeloma
- Stomach

Blacks: The age-adjusted incidence rate among Black Pennsylvania residents for liver/intrahepatic bile duct cancer (17.2 per 100,000 population) was more than two times that of white residents (7.8 per 100,000 population) in 2015. Myeloma also had an incidence rate of more than two times higher among Black residents (13.5 per 100,000 population) than white residents (6.3 per 100,000 population).

¹¹ The New England Journal of Medicine: www.nejm.org/doi/full/10.1056/NEJM200008243430809

¹² The Pennsylvania Department of Health: www.health.pa.gov/topics/HealthStatistics/MinorityHealthStatistics/Documents/Minority_Cancer_Incidence_2015.pdf

Asians and Pacific Islanders: In 2015, the age-adjusted incidence rate among Asians/Pacific Islanders for stomach cancer (9.7 per 100,000 population) and cancer of the liver/intrahepatic bile duct (13.9 per 100,000 population) was almost two times the rate among whites (5.7 and 7.8 per 100,000 population respectively).

Hispanics: In 2015, Hispanics had a significantly higher age-adjusted incidence rate than whites for liver/intrahepatic bile duct cancer. Specifically, the Hispanic liver/intrahepatic bile duct cancer rate (13.9 per 100,000 population) was almost two times that of whites (7.8 per 100,000 population).

Publication data from 2018 reveal the following discharge rates were significantly higher among Black residents compared to whites: ¹³

- Asthma (various age groups)
- Non-fatal spinal cord injuries
- Heart failure (ages 65-74)
- Heart failure (ages 75-84)

The following discharge rates were significantly higher among Hispanic residents compared to whites:¹⁴

- Asthma (various age groups)
- Heart failure (ages 65-74)
- Heart failure (ages 75-84)

Blacks: During 2014, hospital discharge rates per 10,000 for young childhood asthma (under 5) were several times higher among Black residents than white residents, 72.4 versus 13.8. In addition, hospital discharge rates for asthma among Black residents were at least two times higher than white residents in all other age groups. Another major disparity occurred for hospital discharge rates of heart failure among the ages 65-74. The rate was two times higher among Black residents (16.6) than white residents (7.4).

Hispanics: Like Black residents, in 2014, Hispanic residents had elevated hospital discharge rates for asthma compared to white residents. Specifically, the hospital discharge rate per 10,000 for asthma among Hispanic residents under five years of age (38.2) was about three times higher than white residents under 5 (13.8). The hospital discharge rate for asthma among Hispanic residents ages 5 to 64 was more than two times the rate for whites.

COVID-19-related reductions in life expectancy disproportionately affected people of color. People living in rural areas have a lower quality of health care and less access to services than people living in urban and suburban areas.

¹³ The Pennsylvania Department of Health:
www.health.pa.gov/topics/HealthStatistics/MinorityHealthStatistics/Documents/Minority_Hosp_for_Select_Conditions_2014.pdf

¹⁴ Ibid.

Improving health equity engages all community sectors and partners to promote health equity and sustainability through job creation and economic development, transportation access and mobility, access to foods and nutrition, physically active and safe neighborhoods, and improved educational status. Most importantly, to improve access to equitable health care, health equity must be the focus as an organization at all levels and embedded into our practices, processes, actions, and outcomes.

F. Defined Community

A community is defined as the geographic area from where a significant number of the patients utilizing hospital services reside. While the CHNA considers other types of health care providers, the hospital is the single largest provider of acute-care services. For this reason, the utilization of hospital services provides the most precise definition of the community.

The defined community (or primary service area, or PSA) of AHN Wexford encompasses 71 ZIP codes located in Allegheny, Armstrong, Beaver, Butler, Clarion, and Lawrence counties. Map 1 shows AHN Wexford's defined community.

Map 1: 2021 CHNA Study Area/Counties

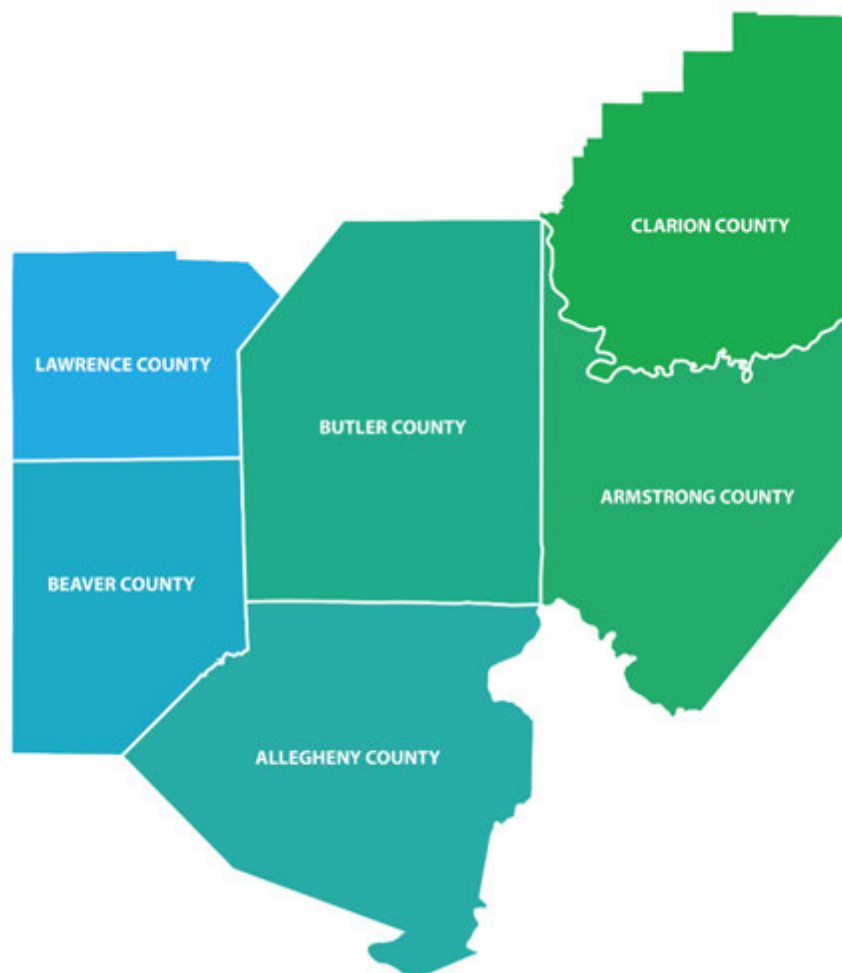


Table 2: Primary Service Area ZIP Codes

ZIP Code	Town	County
15007	Bakerstown	Allegheny
15015	Bradford Woods	Allegheny
15044	Gibsonia	Allegheny
15076	Russellton	Allegheny
15086	Warrendale	Allegheny
15090	Wexford	Allegheny
15101	Allison Park	Allegheny
15229	West View	Allegheny
15237	Pittsburgh	Allegheny
15046	Crescent	Allegheny
15056	Leetsdale	Allegheny
15108	Coraopolis	Allegheny
15143	Sewickley	Allegheny
15225	Pittsburgh	Allegheny
16218	Cowansville	Armstrong
15042	Freedom	Beaver
15074	Rochester	Beaver
15001	Aliquippa	Beaver
15003	Ambridge	Beaver
15005	Baden	Beaver
15009	Beaver	Beaver
15010	Beaver Falls	Beaver
15026	Clinton	Beaver
15027	Conway	Beaver
15043	Georgetown	Beaver
15050	Hookstown	Beaver
15052	Industry	Beaver
15059	Midland	Beaver
15061	Monaca	Beaver
15066	New Brighton	Beaver
15077	Shippingport	Beaver
16115	Darlington	Beaver
16123	Fombell	Beaver
16037	Harmony	Butler
16046	Mars	Butler
16059	Valencia	Butler
16063	Zelienople	Butler
16066	Cranberry Township	Butler

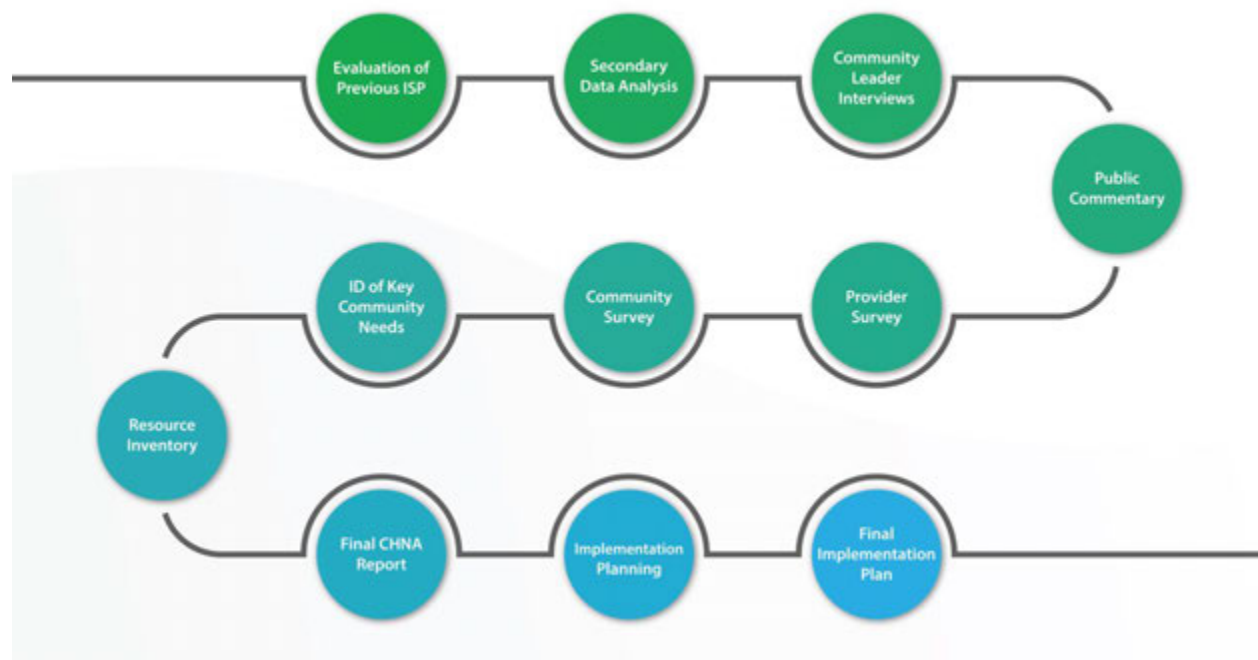
ZIP Code	Town	County
16001	Butler	Butler
16002	Butler	Butler
16020	Boyers	Butler
16022	Bruin	Butler
16023	Cabot	Butler
16025	Chicora	Butler
16030	Eau Claire	Butler
16033	Evans City	Butler
16034	Fenelton	Butler
16038	Harrisville	Butler
16040	Hilliards	Butler
16041	Karns City	Butler
16045	Lyndora	Butler
16050	Petrolia	Butler
16051	Portersville	Butler
16052	Prospect	Butler
16053	Renfrew	Butler
16056	Saxonburg	Butler
16061	West Sunbury	Butler
16028	East Brady	Clarion
16101	New Castle	Lawrence
16102	New Castle	Lawrence
16105	New Castle	Lawrence
16112	Bessemer	Lawrence
16116	Edinburg	Lawrence
16117	Ellwood City	Lawrence
16120	Enon Valley	Lawrence
16141	New Galilee	Lawrence
16142	New Wilmington	Lawrence
16143	Pulaski	Lawrence
16156	Volant	Lawrence
16157	Wampum	Lawrence
16172	New Wilmington	Lawrence

G. Methodology

Tripp Umbach, a planning and research firm specializing in health care, education, government, and corporate clients to improve communities' economic, social, and physical wellbeing, was contracted by Allegheny Health Network to conduct the system's 2021 CHNA. The CHNA report complies with the Internal Revenue Service's guidelines for charitable 501(c)(3) tax-exempt hospitals and includes input from individuals representing the broad interests of the communities served by Allegheny Health Network, including those with direct knowledge of the needs of the medically underserved, disenfranchised populations, and populations suffering from chronic diseases.

The CHNA process began in late June 2021, and it is positioned to conclude in the early spring of 2022 with a final implementation strategy planning report. While multiple steps make up the overall CHNA process, Tripp Umbach will continue to work closely with the CHNA working group members to collect, analyze, and identify the results to complete AHN Wexford's assessment. The data collected and the information being composed will allow further group engagement of internal and external stakeholders to inform the CHNA needs and deliverables.

Figure 4: Data Collection Roadmap



Community Health Needs Assessment Data Collection

AHN Wexford, along with Tripp Umbach, participated in a 39-person steering group consisting of system-level leadership and hospital personnel who have direct patient care/contact and are instrumental in their community. The steering group members have a vast knowledge of the needs of underserved and disenfranchised populations, specifically those with chronic diseases, behavioral health issues, and socioeconomic challenges. To fulfill IRS requirements related to the Affordable Care Act (ACA), AHN Wexford's methodology employed both qualitative and quantitative data.

Evaluation of 2018 Implementation Strategy Plan

AHN Wexford opened its facility in the fall of 2021; therefore, the health care facility did not have a previous implementation plan to evaluate.

Secondary Data Analysis

Secondary data sources at the local, state, and national levels included disparity data, public health priorities related to disease prevalence, socioeconomic factors, health outcomes, and health determinants to create a regional community health data profile based on the location and service areas of Allegheny Health Network. Secondary data was gathered primarily through Community Commons, a publicly available dashboard of multiple health indicators drawn from several national data sources that allowed for the review of past developments and changes related to demographics, health, social, and economic factors. Additional data sources include County Health Rankings, Community Needs Index, and U.S. Census Bureau. The data is also peer-reviewed and substantiated, providing a deep level of validity as a source.

The robust community profile generated a greater understanding of regional issues, mainly identifying regional and local health and socioeconomic issues.

The secondary quantitative data collection process included:

- American Community Survey
- Centers for Disease Control and Prevention
- Centers for Medicare and Medicaid Services
- County Health Rankings and Roadmaps
- Dartmouth College Institute for Health Policy and Clinical Practice
- FBI – Uniform Crime Reports
- Health Resources and Services Administration (HRSA)
- Kaiser Family Foundation (KFF)
- Pennsylvania Department of Health – State Cancer Profiles
- Pennsylvania Department of Health and Vital Statistics

- The Agency for Healthcare Research and Quality (AHRQ)
- U.S. Census Bureau
- U.S. Department of Education National Center for Education Statistics
- U.S. Department of Health and Human Services
- U.S. Department of Labor




Community Stakeholder Interviews

As part of the CHNA phase, telephone interviews were completed with community stakeholders to understand the changing environment. The interviews offered stakeholders an opportunity to provide feedback on the needs of the region they serve and other information relevant to the study. Overall, 59 community stakeholder interviews were conducted for AHN in July-October 2021. Community stakeholders targeted for interviews encompassed a wide variety of professional backgrounds, including:

1. Businesses
2. County and state government representatives
3. Economic development
4. Education
5. Faith-based communities
6. Foundations/philanthropic
7. Health care representatives
8. Law enforcement
9. Non-profits
10. Representatives of underserved populations
11. Social service representatives

Within the interview and discussion process, overall health needs, themes, and concerns were presented. Within each of the overarching themes, additional topics fell under each category. Below are the overall key findings from the interviews identified throughout the discussions.

Community Stakeholder Interviews Common Themes

 Community Problems <hr/> <p><u>Top 3 Persistent Health Problems:</u></p> <ol style="list-style-type: none"> 1. Behavioral health (65.1%) 2. Access to foods (39.7%) 3. Un/Underemployment (39.7%) <p><u>Offer Community to Address Persistent Chronic Diseases</u></p> <ol style="list-style-type: none"> 1. Community Health Workers (46.0%) 2. Population Specific Interventions (15.9%) <p><u>Top 3 High Risk Behaviors</u></p> <ol style="list-style-type: none"> 1. Substance abuse (81.0%) 2. Poor eating/unhealthy eating habits (61.9%) 3. Lack of exercise/inadequate physical activity (49.2%) 	 Community <hr/> <p><u>Top 3 Barriers to Improving health/quality of life</u></p> <ol style="list-style-type: none"> 1. Economic disparities/poverty (58.7%) 2. Difficulties navigating health care system (55.6%) 3. High cost of health care/medications (54.0%) <p><u>Top 3 Would Improve Quality of Life</u></p> <ol style="list-style-type: none"> 1. Access to health foods (57.1%) 2. Mental health services (appointments, bilingual providers) (57.1%) 3. Access to behavioral health services (52.4%) <p><u>Transportation Issues</u></p> <ol style="list-style-type: none"> 1. Limited available transportation services (80.7%) 2. Location of bus stops is inconvenient (51.6%) 3. Lack of education around available resources (40.3%) 	 Information <hr/> <p><u>Top 3 Vulnerable Populations</u></p> <ol style="list-style-type: none"> 1. Children/youth (66.1%) 2. Older adults (66.1%) 3. Low-income (58.1%) <p><u>Solutions to Help Vulnerable Populations</u></p> <ol style="list-style-type: none"> 1. Care coordinators (79.4%) 2. Flexible medical appts. (63.5%) 3. Addressing SDOH (57.1%)
---	---	---

Ten interviews were conducted with community stakeholders who represented AHN Wexford's community. The qualitative data collected are the perceptions and opinions from community stakeholders as part of the CHNA process. The information provides insight and adds great depth to the qualitative data. Community stakeholders interviewed represented the following organizations:

1. North Way Christian Community Church
2. AHN Cancer Institute
3. Butler County Tourism and Convention Bureau
4. Harvest Bible Chapel Pittsburgh North
5. Hefren-Tillotson Inc.
6. Pittsburgh North Regional Chamber of Commerce
7. Walnut Grill Restaurant
8. Alliance for Nonprofit Resources Inc.
9. United Way of Southwestern Pennsylvania
10. Center for Community Resources

Public Commentary

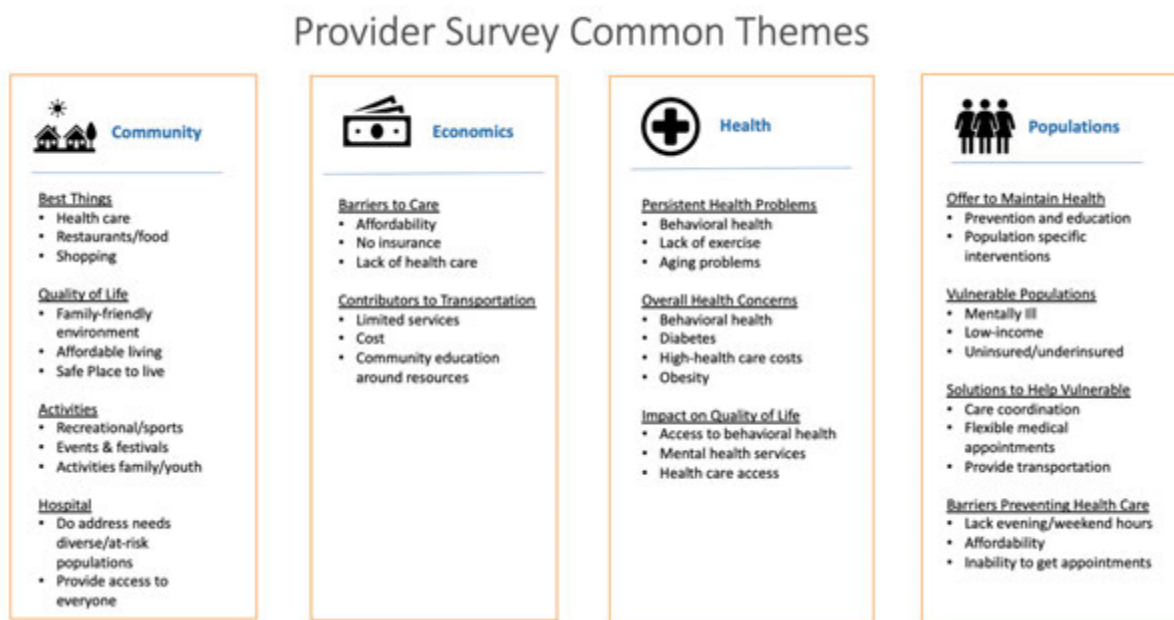
AHN Wexford opened its facility in the fall of 2021; therefore, community stakeholders did not have an implementation plan to evaluate.

Provider Survey

A provider survey was implemented to collect data from providers from the hospital's service areas and region to identify the community's needs and vulnerable populations and those partners/organizations that will be instrumental in addressing prioritized needs. Providers internal and external to Allegheny Health Network received a survey link. In total, 26,616 providers received a survey link; 2,201 surveys were returned/submitted.

A survey instrument was developed and used to obtain vital information through the lens of local providers. Collecting data through the provider survey will allow more appropriate care to populations most in need. The provider audience is also essential to gauge how patients and residents have adjusted their health needs during the COVID-19 pandemic and how providers assisted them.

The provider survey was active in July-August 2021. Below are common themes providers reported in their community.



Community Survey


A community survey was employed to collect input from populations within Allegheny Health Network's service area to identify health risk factors and health needs in the community. Working with leadership from Community Affairs, the community survey was promoted on social media platforms, hospital websites, relationships with community-based organizations, and clinics. An email was sent from Tripp Umbach to community residents requesting survey participation. A \$250 gift card was provided as an incentive for community residents to encourage participation.

Collecting surveys from community residents whose primary language was not English was an essential driver of the initiative. The community survey was available in English, Spanish, Nepalese, Chinese, and



Arabic. An email was sent to more than 43,000 residents in the AHN service area for engagement. A total of 857 English surveys and nine non-English surveys were collected for analysis.

Survey data was collected from Survey Monkey from mid-August 2021 to early October 2021. In total, 866 surveys were used to assure statistical accuracy. A response rate of 1.98% was achieved. Below are common themes from community residents.

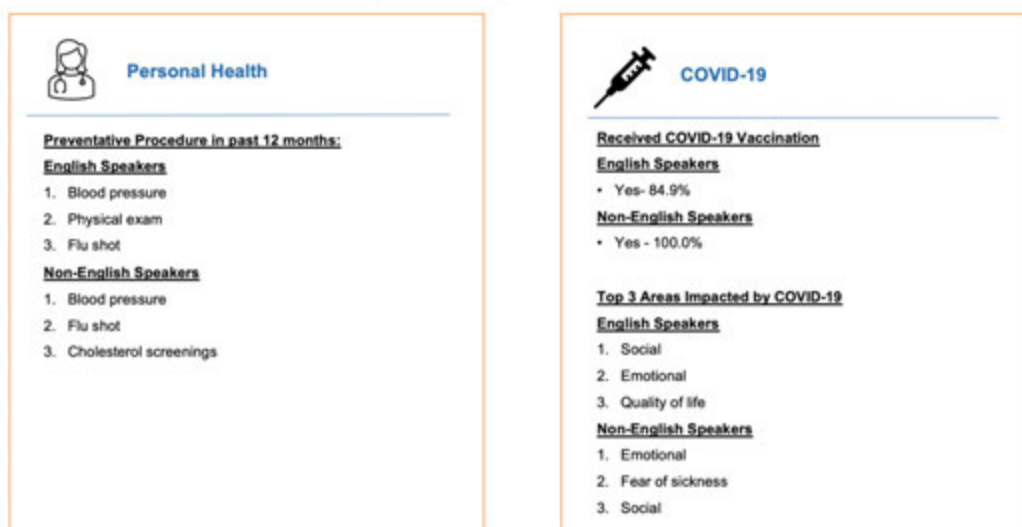
Community Survey Common Themes

 Community <hr/> <p><u>Top 3 Health Problems in Community</u></p> <p><u>English Speakers</u></p> <ol style="list-style-type: none"> 1. Aging problems 2. Drug/alcohol 3. Behavioral/mental health <p><u>Non-English Speakers</u></p> <ol style="list-style-type: none"> 1. Access to healthy foods 2. Dental health 3. Lack of exercise <p><u>Top 3 Factors that Contribute to Healthy Community (English & Non-English Speakers)</u></p> <ol style="list-style-type: none"> 1. Low crime/safe neighborhoods 2. Easy access to health care 3. Good schools 	 Community <hr/> <p><u>Needed to Improve Quality of Life and Health</u></p> <p><u>English Speakers</u></p> <ol style="list-style-type: none"> 1. Affordable health care services 2. Access to drug/alcohol and mental health services 3. Elder care <p><u>Non-English Speakers</u></p> <ol style="list-style-type: none"> 1. Access to drug/alcohol and mental health services 2. Better/more recreational facilities 3. Dental care access 	 Information <hr/> <p><u>Top Place Go for Health Care (English & Non-English Speakers)</u></p> <ol style="list-style-type: none"> 1. Physician offices <p><u>Health Screenings Needed to Stay Healthy</u></p> <p><u>English Speakers</u></p> <ol style="list-style-type: none"> 1. Blood pressure 2. Cholesterol 3. Well check-ups <p><u>Non-English Speakers</u></p> <ol style="list-style-type: none"> 1. Dental screenings 2. Well check-ups 3. Cholesterol
---	--	---

Community Survey Common Themes

 Information <hr/> <p><u>Top 3 Behaviors People Need more Information About:</u></p> <p><u>English Speakers</u></p> <ol style="list-style-type: none"> 1. Chronic disease prevention/mgmt. 2. Substance abuse prevention 3. Care for family members w/special needs/disabilities <p><u>Non-English Speakers</u></p> <ol style="list-style-type: none"> 1. Chronic disease prevention/management 2. Eating well/nutrition 3. Exercising/fitness 	 Personal Health <hr/> <p><u>Describe One's Overall Health</u></p> <p><u>English Speakers</u></p> <ol style="list-style-type: none"> 1. Excellent/very good – 35.2% <p><u>Non-English Speakers</u></p> <ol style="list-style-type: none"> 1. Excellent/very good – 66.7% <p><u>Top 3 Health Personal Challenges</u></p> <p><u>English Speakers</u></p> <ol style="list-style-type: none"> 1. Joint, muscle, and back pain 2. Overweight/obesity 3. High blood pressure <p><u>Non-English Speakers</u></p> <ol style="list-style-type: none"> 1. Arthritis 2. Joint, muscle, and back pain 3. High blood pressure
---	--

Community Survey Common Themes



Identification of Key Community Needs

The AHN CHNA Steering Committee, composed of interdisciplinary representatives from each of the hospitals as well as service leaders, reviewed primary data and secondary data sources to identify community needs and trends. The community needs were identified by changes in population health status and areas in need of further effort and support. The discussions served as a basis for prioritizing the 2021 community needs and the deployment of resources and community assets to meet those needs.

Resource Inventory

An inventory of programs and services available in the region was developed by Tripp Umbach. This inventory highlights available programs and services within all the counties that fall under each of the priority need areas.

The inventory identifies the range of organizations and agencies in the community that serve the various target populations within each of the priority needs. It provides program descriptions and collects information about the potential for coordinating community activities and creating linkages among agencies.

Data Limitations

Data collected for the 2021 CHNA has limitations in information. Primary data obtained through interviews and surveys are also limited in representing the hospital's service area as information was collected through convenience sampling. Secondary data is not specific to the hospital's primary service area. However, the report provides an opportunity to gauge and envision issues within a large geographic region.

H. Steering Committee Members

AHN Steering Committee	
AHN Allegheny General	Alex Matthews
AHN Allegheny Valley	Kimberly Giovanelli
AHN Canonsburg	Keith Zimmer
AHN Forbes	Krista Bragg
AHN Forbes	Kelly Wooddell
AHN Grove City	Dr. David Tupponce
AHN Jefferson	Erin Joyce
AHN Saint Vincent	Henry Ward
AHN West Penn	Robin Nitkulinec
AHN Westfield	Karen Surkala
AHN Westfield	Rodney Buchanan
AHN Wexford	Laurin Scanlon
AHN Neighborhood Hospitals	Julie FERENCE
AHN Allegheny Clinic	Margaret Palumbo
AHN Cardiovascular Institute	Peggy McGowan
AHN Center for Inclusion Health	Kristin Lazzara
AHN Community Affairs	Nina Ferraro
AHN Community Affairs	Kannu Sahni
AHN Community Affairs	Amie Signorella
AHN Community Affairs	Nina Sexton
AHN Corporate Communications	Julie Emanuel
AHN Corporate Taxes	Jeff Manners
AHN Corporate Taxes	Bernard Azinon
AHN Development	Allie Quick
AHN Diversity, Equity & Inclusion (DEI)	Dr. Margaret Larkins-Pettigrew
AHN Diversity, Equity & Inclusion (DEI)	Veronica Villalobos
AHN Diversity, Equity & Inclusion (DEI)	Mark Jones
AHN Institute Planning	Michele Steigerwald
AHN Marketing	Manfred Woodall
AHN Marketing	Kelly Dennin
AHN Marketing	Jesse Miller
AHN Medicine Institute	Dr. Paul Lebovitz
AHN Nursing	Claire Zangerle
AHN Oncology	Crystal Ross
AHN Prehospital Services	Jonah Thompson
AHN Prehospital Services	Robert Twaddle
AHN Social Determinants of Health (SDOH)	Amanda Mihalko
AHN Social Determinants of Health (SDOH)	Mary Ann Matreselva
AHN Women & Children's Institute	Joan Washburn

I. Additional Information

With the conclusion of the CHNA, AHN and AHN Wexford will begin the implementation planning phase to identify and leverage AHN's collective strengths and resources to best address the communities' health needs.

For additional information about the CHNA and its specific findings, please contact Community Affairs at Highmark Health and Allegheny Health Network.

Kannu Sahni

Vice President of Community Affairs

Highmark Health and Allegheny Health Network

120 Fifth Avenue, Pittsburgh PA 15222

Mailcode: FAPHM – 143A

Kannu.Sahni@highmarkhealth.org