

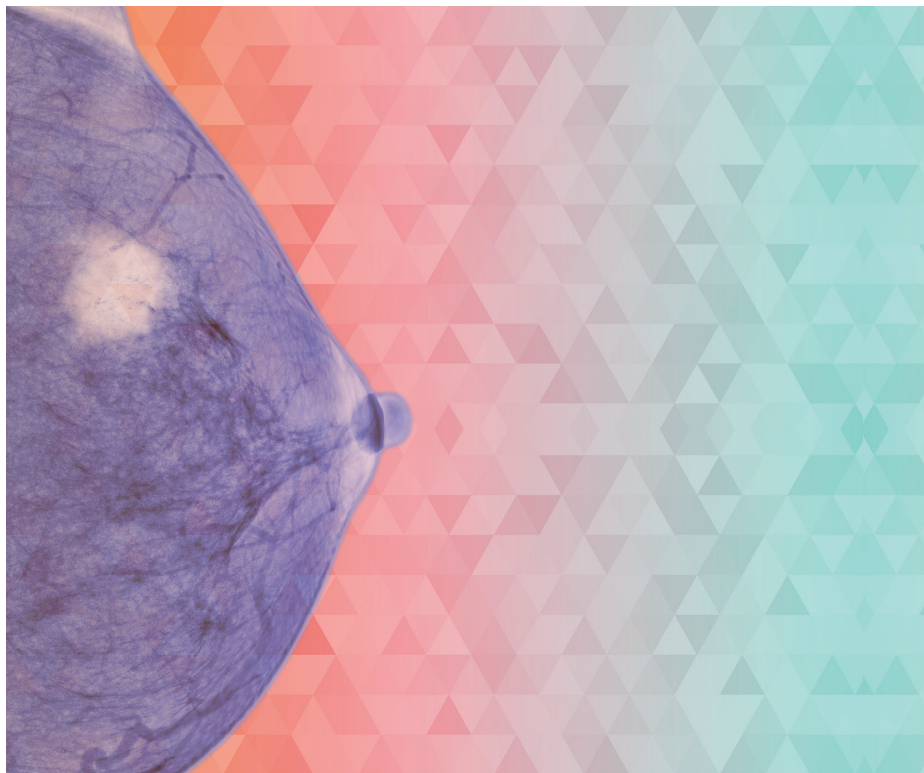
# 2018 San Antonio Breast Cancer Symposium Review

**Friday, January 25, 2019**

*Pittsburgh Marriott City Center*

*112 Washington Place*

*Pittsburgh, PA 15219*



## Sponsored by

Allegheny Health Network Cancer Institute

Allegheny General Hospital

Pittsburgh, Pennsylvania



Allegheny Health Network

**Allegheny General**  
Hospital

## Conference Directors

### Thomas B. Julian, MD, FACS

Associate Medical Director of Cancer Program  
Development, AHN Cancer Institute  
Breast Surgical Oncology-AHN  
NRG/NSABP PI-AHN  
Deputy Chair-Communications-NRG Oncology  
Professor of Surgery  
Drexel University College of Medicine  
Professor of Surgery  
Temple University School of Medicine

### Christie Hilton DO

Division of Hematology and Oncology  
Allegheny Health Network Cancer Institute  
Allegheny General Hospital

## Faculty

### Helen Analo, MD

Division of Hematology and Oncology  
Allegheny Health Network Cancer Institute  
Allegheny General Hospital

### Diane Buchbarker, MD

Division of Hematology and Oncology  
Allegheny Health Network Cancer Institute  
Allegheny General Hospital

### Antonios Christou, MD

Division of Hematology and Oncology  
Allegheny Health Network Cancer Institute  
Allegheny General Hospital

### Tom Colonias, MD

System Director, Thoracic Malignancies/  
Clinical Trials, AHN Radiation Oncology  
AHN Cancer Institute  
AHN IRB, Vice Chair  
Allegheny General Hospital

### Larisa Greenberg, MD

Division of Hematology and Oncology  
Allegheny Health Network Cancer Institute  
Allegheny General Hospital

### Angela Keleher, MD

Division Director of Breast Surgery  
Allegheny Health Network Cancer Institute

### Arti Parekh, MD

Division of Radiation Oncology  
Allegheny Health Network Cancer Institute  
Allegheny General Hospital

### Mark Trombetta, MD, FACP

Professor of Radiation Oncology; Drexel  
University College of Medicine  
System Director of Clinical Programs  
Allegheny Health Network Cancer Institute

## Conference Overview

The rate of discovery of new information related to the diagnosis and treatment of breast cancer has a major impact on clinical decision making in selecting therapy for each patient. High-impact findings with clinical relevance for physicians caring for women with breast cancer are presented each year at the International San Antonio Breast Cancer Symposium. The 2018 meeting will be attended by physicians and scientists who will present abstracts at both the plenary lecture and poster sessions. Practicing clinicians and other oncology health care professionals who are unable to attend the meeting will benefit from a presentation of the symposium highlights, which will offer an opportunity for interactive discussion with expert faculty. This conference will review the most important findings from San Antonio.

At the conclusion of this course, participants should be able to:

- Summarize current information relevant to the evolving biology of breast cancer related to hormonal and chemotherapy research in the adjuvant and metastatic locally advanced breast cancer setting with regard to clinical trials and treatment
- State the advances in biological prognostic factors for early stage breast cancer
- Discuss surgical management and breast conservation therapy for patients with breast cancer

## Intended Audience

This conference has been designed to provide practicing oncologists, surgeons, radiologists and other health care professionals information on current concepts in the management of patients with breast cancer.

## Conference Schedule

### San Antonio Breast Cancer Symposium Review

Friday, January 25, 2019

- 8:00 a.m.**     *Registration/Continental Breakfast/ Visit Exhibits*
- 8:55 a.m.**     Introduction • **Thomas B. Julian, MD & Christie Hilton, DO**
- 9:00 a.m.**     Adjuvant Endocrine Therapy • **Diane Buchbarker, MD**
- 9:30 a.m.**     HER2 Therapy Update • **Helen Analo, MD**
- 10:00 a.m.**    *Break and Refreshments /Visit Exhibits*
- 10:30 a.m.**    TNBC/Non Her2 Breast Cancer Update • **Christie Hilton, DO**
- 11:00 a.m.**    Novel Therapeutics • **Larisa Greenberg, MD**
- 11:30 a.m.**    *Lunch*
- 12:30 p.m.**    NSABP B-39/RTOG 0413 • **Thomas B. Julian, MD**
- 12:45 p.m.**    Local/Regional Therapies • **Angela Keleher, MD**
- 1:15 p.m.**     Radiation Therapies • **Mark Trombetta, MD**
- 1:45 p.m.**     Tumor Board Panel • **Moderator: Tom Colonias, MD**  
**Panelists: Antonios Christou, MD; Angela Keleher, MD; Arti Parekh, MD**
- 2:30 p.m.**     AHN Active Breast Clinical Trials • **Thomas B. Julian, MD**
- 2:50 p.m.**     *Closing Remarks/ Adjournment*

## Disclaimer

Participants have an implied responsibility to use the newly acquired information from this symposium to enhance patient outcomes and their own professional development. The information presented in this activity is not meant to serve as a guideline for patient management. Any procedures, medications or other courses of diagnosis or treatment discussed or suggested in this activity should not be used by clinicians without evaluation of their patient's conditions and possible contraindications on dangers in use, review of any applicable manufacturer's product information, and comparison with recommendations of other authorities.

*In accordance with the Accreditation Council for Continuing Medical Education (ACCME) and the policy of Allegheny General Hospital, presenters must disclose all relevant financial relationships, which in the context of their presentation(s), could be perceived as a real or apparent conflict of interest, (e.g., ownership of stock, honoraria or consulting fees). Any identifiable conflicts will be resolved prior to the activity. Any such relationships will be disclosed to the learner prior to the presentation(s).*

## Accreditation

Allegheny General Hospital is accredited by the Accreditation Council for Continuing Medical Education to provide continuing medical education for physicians.

### Credit Designation Statement

Allegheny General Hospital designates this live activity for a maximum of 4.5 *AMA PRA Category 1 Credits™*. Physicians should claim only the credit commensurate with the extent of their participation in the activity.

### Other Credit

**American Nurses Credentialing Center (ANCC)** accepts *AMA PRA Category 1 Credits™* from organizations accredited by the ACCME.

**American Academy of Nurse Practitioners (AANP)** accepts *AMA PRA Category 1 Credits™* from organizations accredited by the ACCME.

**American Academy of Physician Assistants (AAPA)** accepts *AMA PRA Category 1 Credits™* from organizations accredited by the ACCME.

Allegheny General Hospital has approved this activity for 4.5 contact hours for non-physicians

## Refund Policies

A refund of the registration fee, less a \$10.00 processing fee, will be made when a written request or a telephone request followed by a written confirmation is received prior to January 18, 2019. After this date, refunds will not be made. Fees will not be refunded for failure to attend. The sponsors of this conference reserve the right to cancel or postpone any conference because of unforeseen circumstances or insufficient enrollment. In the event of such cancellation, full tuition will be refunded.

## Registration Information

The registration fee includes conference materials, continental breakfast and break refreshments and lunch.

Fee: **Physicians** \$90

**Nurses and Other Health Care Professionals** \$45

**AHN Employee** \$25

**Fellows and Residents** No Fee

**Offsite Webcast Attendee** \$30 (limited to first 25 registrants)

**DEADLINE: January 18, 2019**

**(Registrations will be taken after the deadline date on a space-available basis.)**

**To Register:** To register online, please go to [www.aghcme.org](http://www.aghcme.org) and select conference schedule from the menu on the left.

## Additional Information

For additional information concerning the conference, please contact the Continuing Medical Education office by e-mail at [rachel.phillips@ahn.org](mailto:rachel.phillips@ahn.org), by telephone at **412.359.4952**.

Continuing Medical Education  
Allegheny General Hospital  
320 East North Avenue  
Pittsburgh, Pennsylvania 15212-4772

[www.aghcmce.org](http://www.aghcmce.org)